

RETRO-FIT

Glass Bathroom Sinks



Shown in Champagne Gold

Pebble Undermount/Drop-In Combination Sink

Install as either an Undermount or Drop-In

- Inner: 17" x 14"
- Outer: 19 1/2" x 16 1/4"
- Overflows: Special Order
- Drain: 1 3/4"



Shown in Pewter

Undermount Lavatory

- Inner: 17 5/8" x 14 3/4"
- Outer: 19 3/4" x 16 3/8"
- Overflows: Special Order
- Drain: 1 3/4"



Shown in Sea Green

Drop-In Lavatory

- Inner: 15 1/8" x 10"
- Outer: 20" x 17"
- Overflows: Special Order
- 8" Faucet Spread
- Drain: 1 3/4"

Glass Kitchen Sinks

The only Functional Glass Kitchen Sink on the Market!

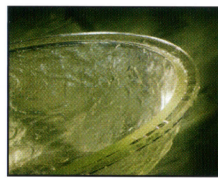


Shown in Black Nickel

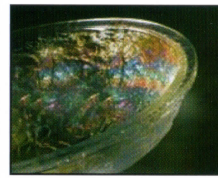
Drop-In or Undermount

- Inner: 15 3/4" x 14 1/8"
- Outer: 18 1/8" x 16 1/2"
- Depth: 8 1/4"
- Drain: 3 1/2"

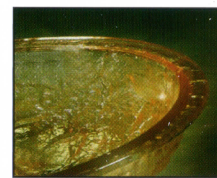
JSG Oceana Glass Colorations



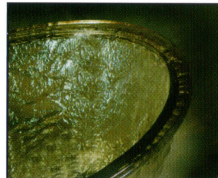
Crystal



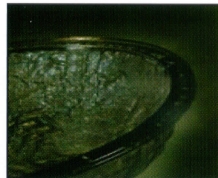
Crystal Reflections



Champagne Gold



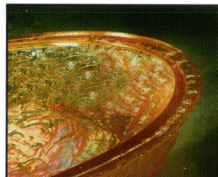
Sea Green



Black Nickel



Fawn



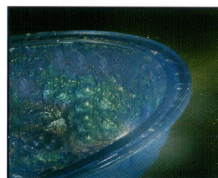
Gold Reflections



Green Reflections



Pewter



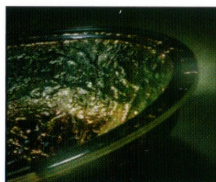
Slate Blue Reflections



Steel Gray



Pearl



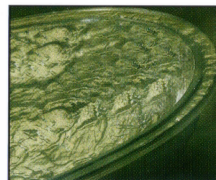
Blue Reflections



Copper



24K Gold



Platinum

JSG Oceana lustrous colorations are an art form. No two sinks are exactly alike. Slight variations including crystalline material and bubbles are common contributions to the aesthetic value of the product.

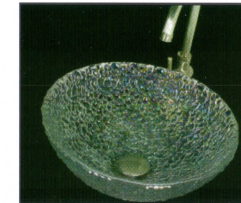
Why is JSG Oceana Glass Superior?

JSG Oceana vs. The Competition	Hard Roc Glass	Soda-Lime Glass	Stainless Steel	Porcelain
Scratch Resistant	Yes	No	No	No
Stain Resistant	Yes	Somewhat	No	No
Thermal Shock Resistant	Yes	No	N/A	N/A
Possible Explosion	Not At All	Yes	No	No
IAPMO Certified	Yes	Some	Yes	Yes

Made in the USA 

Glass Vessels

Pebble 16" Vessel



Shown in Crystal Reflections

- Width: 16" Diameter
- Height: 5 1/2"
- Depth: 5"
- Rim: Free formed

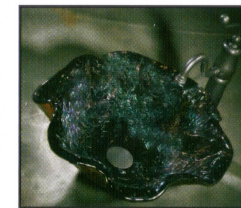
JSG Oceana Vessels

- 17" - 6" tall, 5 1/2" deep
- 16" - 5 1/2" tall, 5" deep
- 15" - 4 1/2" tall, 4" deep
- 12" - 5 3/4" tall, 5 1/4" deep
(15" & 16" Rim: Free formed)
(12" & 17" Rim: Defined)



Shown in Copper

Alina Art Vessel



Shown in Blue Reflections

- Width: min. 17", max. 20"
- Depth: min. 4", max. 7"
- Rim: Free formed
- Unique—no two alike
- Signed by the artist

Brianna Art Vessel



Shown in Black Nickel

- Width: min. 18", max. 19"
- Depth: min. 4", max. 4 1/2"
- Rim: Free formed
- Unique—no two alike
- Signed by the artist

***All Lavatory Vessels have a 1 3/4" Drain Hole.**

Check out our Kitchen Sink Videos on 